



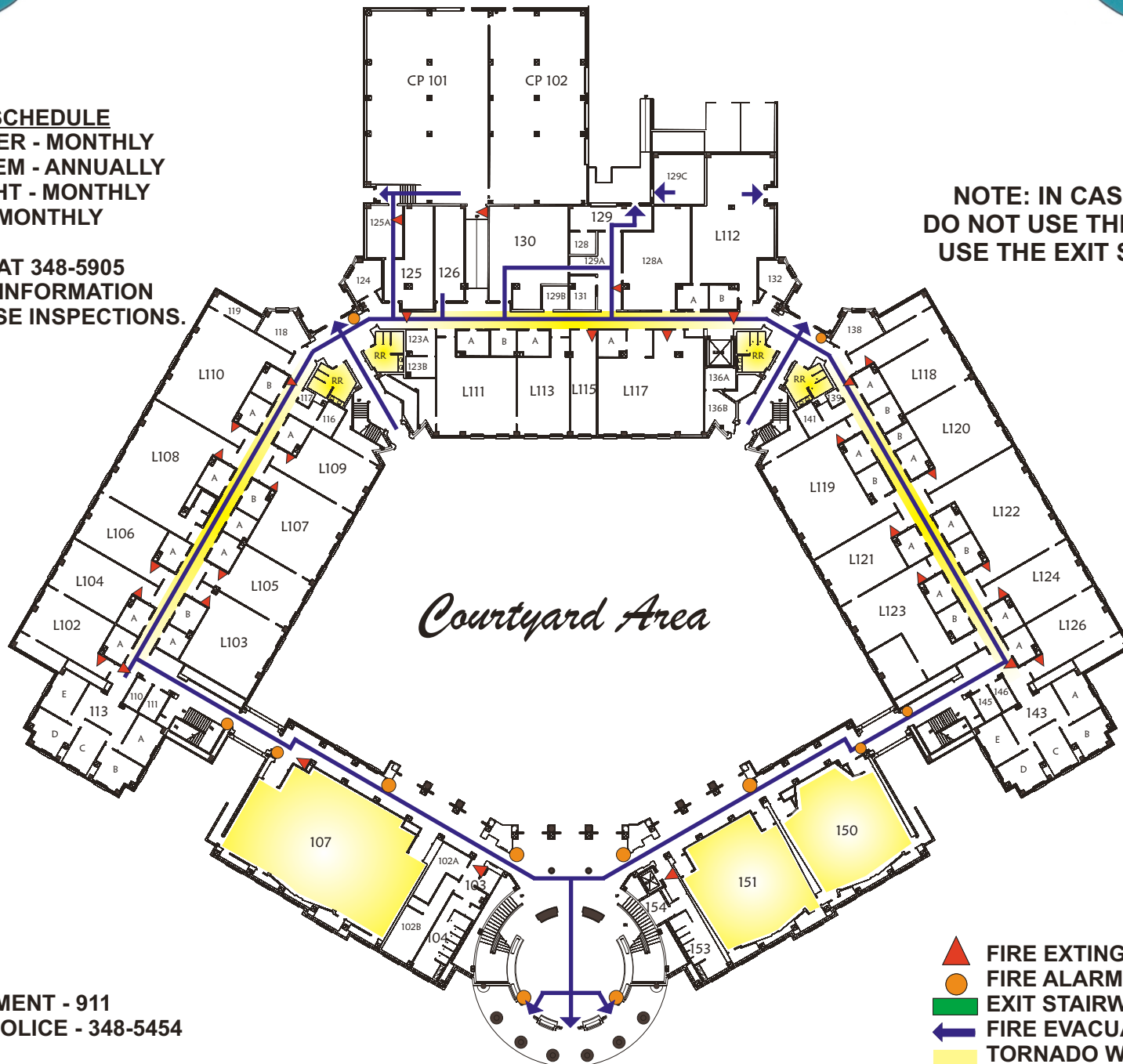
EMERGENCY PLAN SHELBY HALL FIRST FLOOR








INSPECTION SCHEDULE
FIRE EXTINGUISHER - MONTHLY
FIRE ALARM SYSTEM - ANNUALLY
EMERGENCY LIGHT - MONTHLY
EXIT LIGHT - MONTHLY

CONTACT EHS AT 348-5905
FOR ADDITIONAL INFORMATION
PERTAINING TO THESE INSPECTIONS.

**NOTE: IN CASE OF A FIRE
DO NOT USE THE ELEVATORS,
USE THE EXIT STAIRWELLS.**



FIRE DEPARTMENT - 911
UNIVERSITY POLICE - 348-5454

-  FIRE EXTINGUISHER
-  FIRE ALARM PULL BOX
-  EXIT STAIRWELL
-  FIRE EVACUATION ROUTE
-  TORNADO WARNING SHELTER