



# EMERGENCY PLAN SHELBY HALL SECOND FLOOR

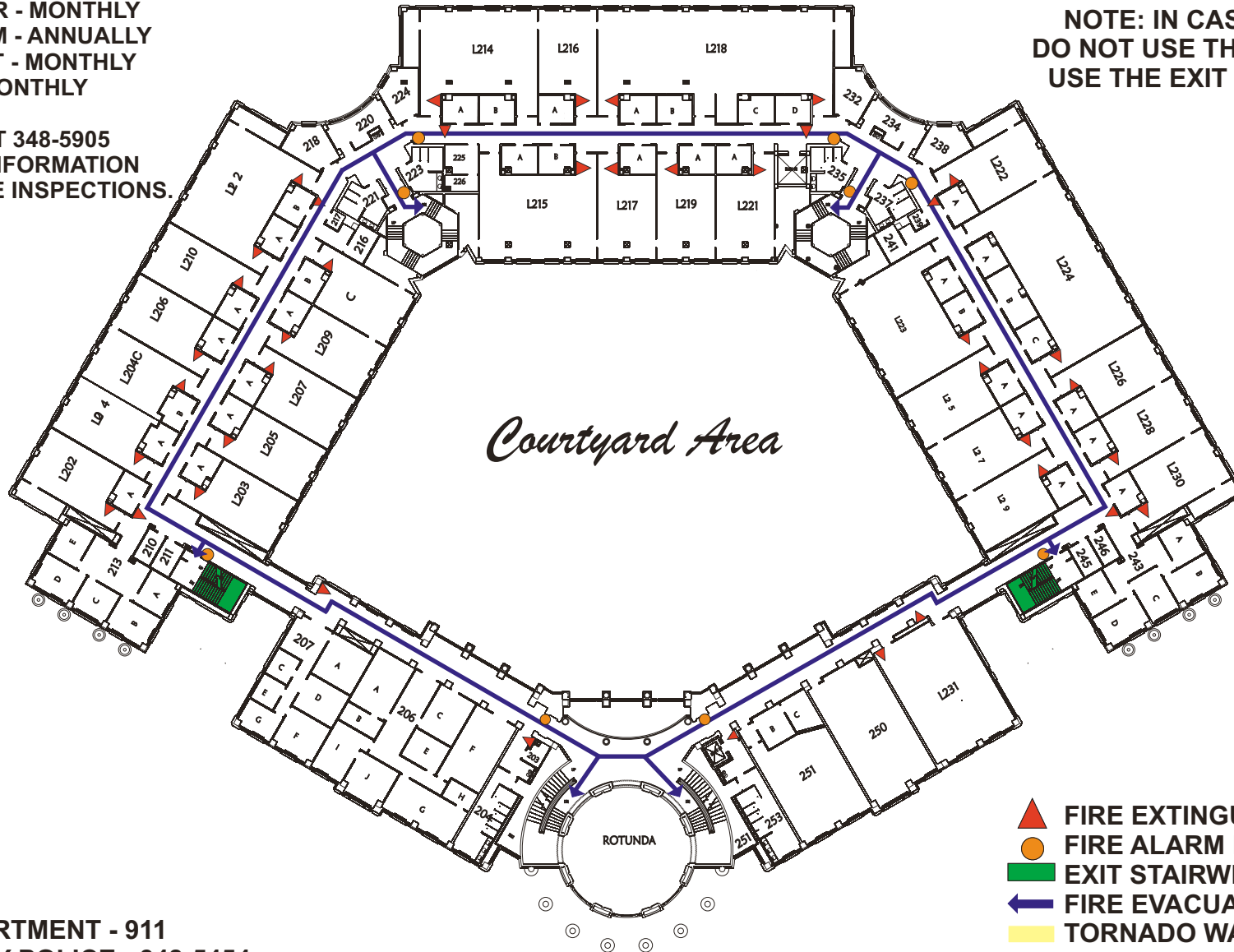


### INSPECTION SCHEDULE

- FIRE EXTINGUISHER - MONTHLY
- FIRE ALARM SYSTEM - ANNUALLY
- EMERGENCY LIGHT - MONTHLY
- EXIT LIGHT - MONTHLY

**NOTE: IN CASE OF A FIRE  
DO NOT USE THE ELEVATORS,  
USE THE EXIT STAIRWELLS.**

**CONTACT EHS AT 348-5905  
FOR ADDITIONAL INFORMATION  
PERTAINING TO THESE INSPECTIONS.**



- FIRE EXTINGUISHER
  - FIRE ALARM PULL BOX
  - EXIT STAIRWELL
  - FIRE EVACUATION ROUTE
  - TORNADO WARNING SHELTER
- TORNADO WARNING SHELTERS  
AVAILABLE ON THE FIRST FLOOR**

**FIRE DEPARTMENT - 911  
UNIVERSITY POLICE - 348-5454**