



EMERGENCY PLAN SHELBY HALL THIRD FLOOR

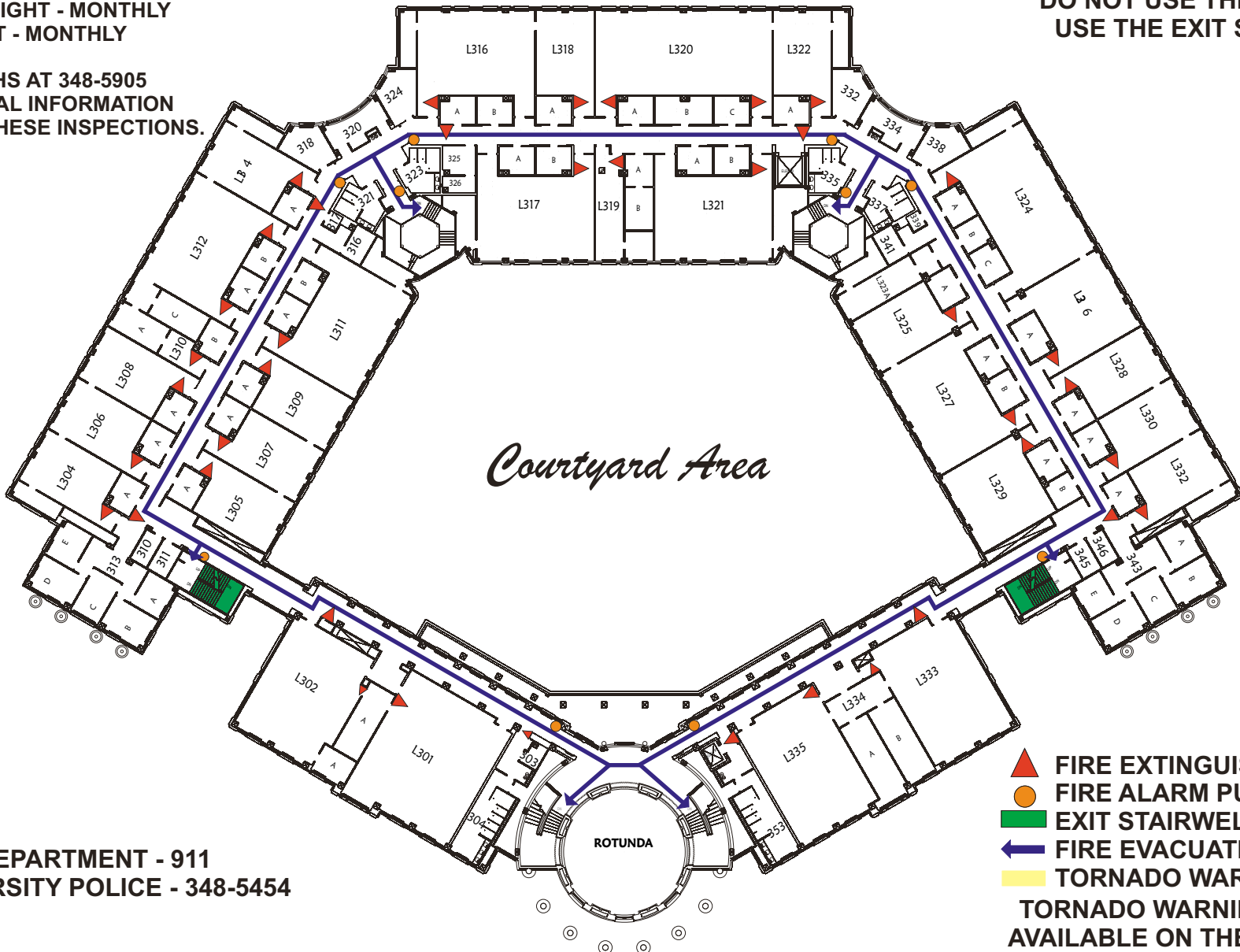


INSPECTION SCHEDULE

- FIRE EXTINGUISHER - MONTHLY
- FIRE ALARM SYSTEM - ANNUALLY
- EMERGENCY LIGHT - MONTHLY
- EXIT LIGHT - MONTHLY

**NOTE: IN CASE OF A FIRE
DO NOT USE THE ELEVATORS,
USE THE EXIT STAIRWELLS.**

**CONTACT EHS AT 348-5905
FOR ADDITIONAL INFORMATION
PERTAINING TO THESE INSPECTIONS.**



- FIRE EXTINGUISHER
 - FIRE ALARM PULL BOX
 - EXIT STAIRWELL
 - FIRE EVACUATION ROUTE
 - TORNADO WARNING SHELTER
- TORNADO WARNING SHELTERS
AVAILABLE ON THE FIRST FLOOR**

**FIRE DEPARTMENT - 911
UNIVERSITY POLICE - 348-5454**